

Human HGF R/c-MET Protein

Cat. No. MET-HM201

Description

Source	Recombinant Human HGF R/c-MET Protein is expressed from HEK293 with hFc tag at the C-Terminus. It contains Glu25-Thr932.
Accession	P08581-1
Molecular Weight	The mature form of HGF R is a heterodimer which can be cleaved into α and β chain. The protein has a predicted MW of 32.5 kDa (α chain) and 95.9 kDa (β chain Fc chimera). Due to glycosylation, the protein migrates to 45-55 kDa and 100-120 kDa based on Tris-Bis PAGE result.
Endotoxin	Less than 1EU per μ g by the LAL method.
Purity	> 95% as determined by Tris-Bis PAGE

Formulation and Storage

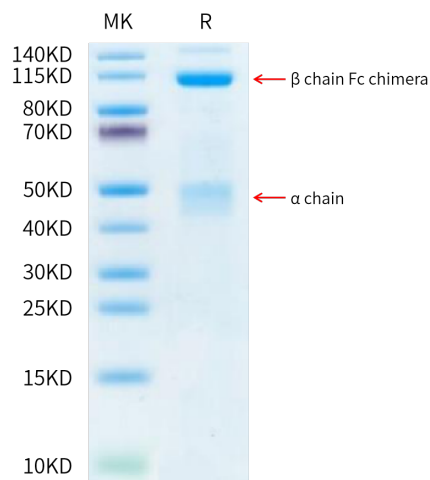
Formulation	Lyophilized from 0.22 μ m filtered solution in PBS (pH 7.4). Normally 8% trehalose is added as protectant before lyophilization.
Reconstitution	Centrifuge the tube before opening. Reconstituting to a concentration more than 100 μ g/ml is recommended. Dissolve the lyophilized protein in distilled water.
Storage	-20 to -80°C for 12 months as supplied from date of receipt. -80°C for 3-6 months after reconstitution. 2-8°C for 2-7 days after reconstitution. Recommend to aliquot the protein into smaller quantities for optimal storage. Please minimize freeze-thaw cycles.

Background

c-Met, also called tyrosine-protein kinase Met or hepatocyte growth factor receptor (HGF R), is a protein that in humans is encoded by the MET gene. The protein possesses tyrosine kinase activity. The primary single chain precursor protein is post-translationally cleaved to produce the alpha and beta subunits, which are disulfide linked to form the mature receptor. Following activation by ligand, interacts with the PI3-kinase subunit PIK3R1, PLCG1, SRC, GRB2, STAT3 or the adapter GAB1. Recruitment of these downstream effectors by MET leads to the activation of several signaling cascades including the RAS-ERK, PI3 kinase-AKT, or PLCgamma-PKC. The RAS-ERK activation is associated with the morphogenetic effects while PI3K/AKT coordinates prosurvival effects. During embryonic development, MET signaling.

Assay Data

Tris-Bis PAGE



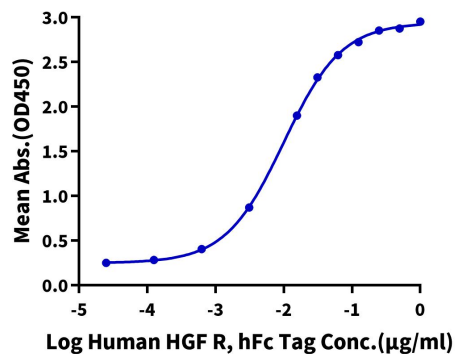
Human HGF R on Tris-Bis PAGE under reduced condition. The purity is greater than 95%.

ELISA Data

Assay Data

Human HGF R, hFc Tag ELISA

0.2µg Human HGF, His Tag Per Well

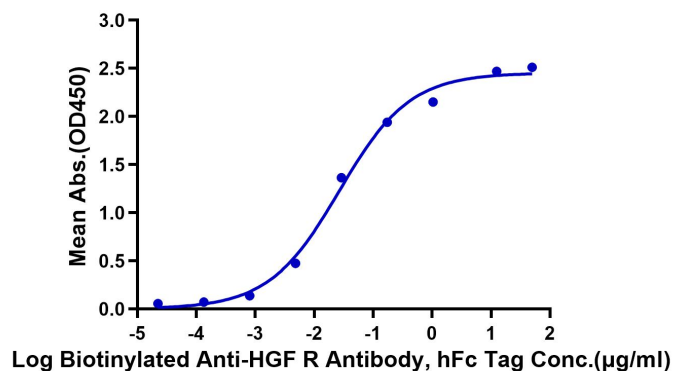


Immobilized Human HGF, His Tag at 2µg/ml (100µl/Well) on the plate. Dose response curve for Human HGF R, hFc Tag with the EC50 of 23.7ng/ml determined by ELISA (QC Test).

Assay Data

ELISA Data

Human HGF R, hFc Tag ELISA
0.5µg Human HGF R, hFc Tag Per Well



Immobilized Human HGF R, hFc Tag at 5µg/ml (100µl/Well) on the plate. Dose response curve for Biotinylated Anti-HGF R Antibody, hFc Tag with the EC50 of 26.7ng/ml determined by ELISA.